

NextGen Technology & Wellness Assessment (Integrating Data)



COLLAGE Symposium
September 28, 2010
Peter Kress

A New Technology Context

- Emergence of the Mobile/Social Web
 - Previous Technology Generations
 - Mainframe
 - Minicomputer
 - Desktop
 - Desktop Internet
 - Each Generation Increases Users and Decreases Costs by an order of Magnitude
- Super-Characteristics
 - Real-time
 - Accessible
 - Cheap

Seven Capabilities

- **Wireless**
 - Ubiquitous, Fast Connectivity
- **Devices**
 - Powerful, Person Scaled, Purpose Built Mobile Devices
- **Context**
 - Smart Environments, Sensors and Data Streams
- **Social**
 - The Web is a People Web
- **Clouds**
 - Accessible, Available, Comprehensive Data Clouds
- **Analytics**
 - Complex Analytics and Interpretive Visualization
- **Apps**
 - There's an App for That

Wireless: Ubiquitous & Fast

- Not just wireless/evolving standards
 - Fiber to the home/business
 - 3G to 4G networks in the mobile space
 - WIFI within public & private spaces (802.11n)
 - community, coffee shop, home, car & personal hotspots
 - FCC has approved “WIFI on Steroids” <whitespace>
- Inexpensive
 - 15-25 MB/s at \$40-60/month
 - Mobile services \$25-50/month
 - Phone & TV charges are being subsumed
- But Just Getting Started
 - National Broadband Plan 100/100
 - 100 million homes with 100 mb/s by 2020 <Chattanooga 1gb/s>
 - Towns & Communities (schools) with 1 gb/s
 - Free tier of lowcost wireless for those who can't afford
- No longer an obstacle, an enabler, uses not yet imagined



MIFI

Devices: Human Scale/Purpose Built

■ Purpose built, Powerful, Connected Devices

■ Handhelds

- 2010 smart phones same specs as 2004 pc
- New Ipad touch at \$229
- Over 300,000 smart phones being activated every day



Tablets

- Ipad came out April 3 with aggressive \$499 price
- 30 Ipad competitors in next six months
- 3-12" tablets will range from \$200 - \$800

■ Other Devices

- Uses simultaneously converging & diverging
- E-readers, Kiosks, Netbooks

■ Screens

■ Touch, Gesture, Voice & Context Inputs

- Significantly simpler to use
- 30-70% Lower Total Cost of Ownership vs PC

Context: Smart Environments

- Sensors & Cameras
 - Environmental Indicators
 - Activity Indicators
 - Location Data
 - Assets & Entities
- Enabling
 - Automatic Self Service Checkout
 - Asset Location
 - Environmental Monitoring
 - Traffic Monitoring
 - Location Monitoring
 - Health Status Monitoring



Social: Web is a People Web

■ Social Media:

■ Social Networking

- Facebook, Twitter, LinkedIn, Buzz

■ Social Content

- Youtube, Wikipedia, Blogosphere

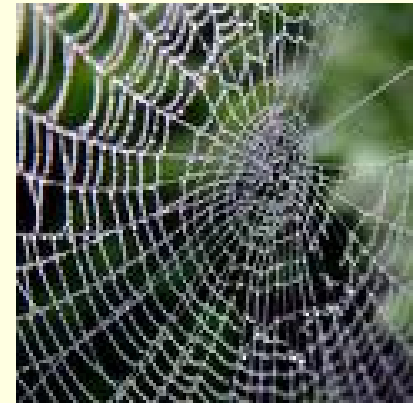
■ Social Search & Commerce

- Rating, Preference, Reviews

■ Social Transactions

■ Connected Global Consumers are Tripling

- 1 Billion to 3 Billion by 2015 (4B Cell phones today)
- Creating, Consuming, Transacting the web



Data Clouds & Analytics

- Accessible, Available, Comprehensive
 - Google Maps
 - Media: Google Books Project – 7 mm volumes
 - Human Genome
 - Wikipedia
- Complex Analysis & Interpretive Visualization
 - Wolfram Alpha
 - Modelling
- Business data strategies
 - Leverage external datasets
 - Build comprehensive internal datasets
 - Sophisticated analysis
 - Fundamental Challenge: How to interpret data
- See “Theres an App for That”

There's an App for That

■ App Stores

- Simplifies discovery, procurement, and management
- Leverage clouds for data & storage
- Simplified, focused packaging of capability

■ New App Architecture

- Massive Data Clouds (i.e. Health Record Utility)
- Customized community based workflows
 - Traditional scope of application
- Role & Context based Apps provide user interface

■ The Mashup

- Leveraging Capability in innovative ways

Count Down To Impact

- The Internet Transformed Many Businesses
 - Finance
 - Media
 - Retail
 - Information
- But not all <not aging services><people business>
- Mobile Web will transform many more
 - Energy
 - Education
 - Hospitality
 - Healthcare
- Envisioning
 - Emerging Experiences

Emerging Experiences

Empowering Workers: 12 Apps

- MyBrand
- MyEmployment
- MySkills
- MyCustomers
- MyTeams
- MySchedule
- MyChecklists
- MyTools
- MyReference
- MyFuture
- PokeMe
- PokeYou

Hypothetical MyWorkLife Apps



Emerging Experiences Empowering Residents

■ Cultivating the Muse

- Extending the wii phenomenon
 - virtual presence & engagement
- Creative uses of facetime
- Travel, Entertainment, Arts

■ Telling Stories <Facebook>

- Intergenerational collaboration
- Re-establishing life connections
- Maintaining relationships & affiliations

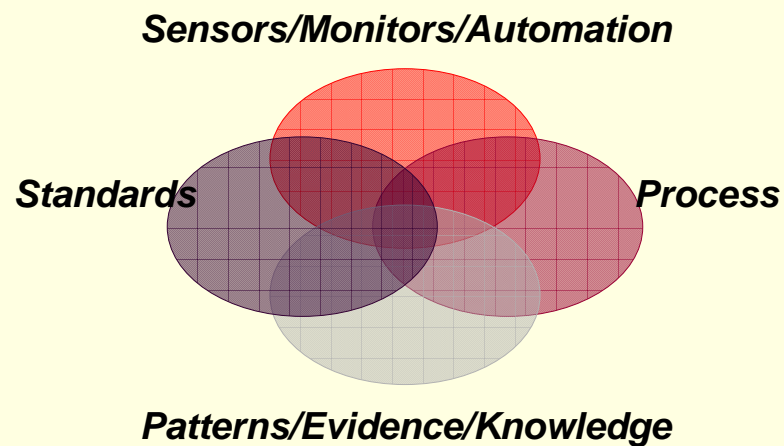
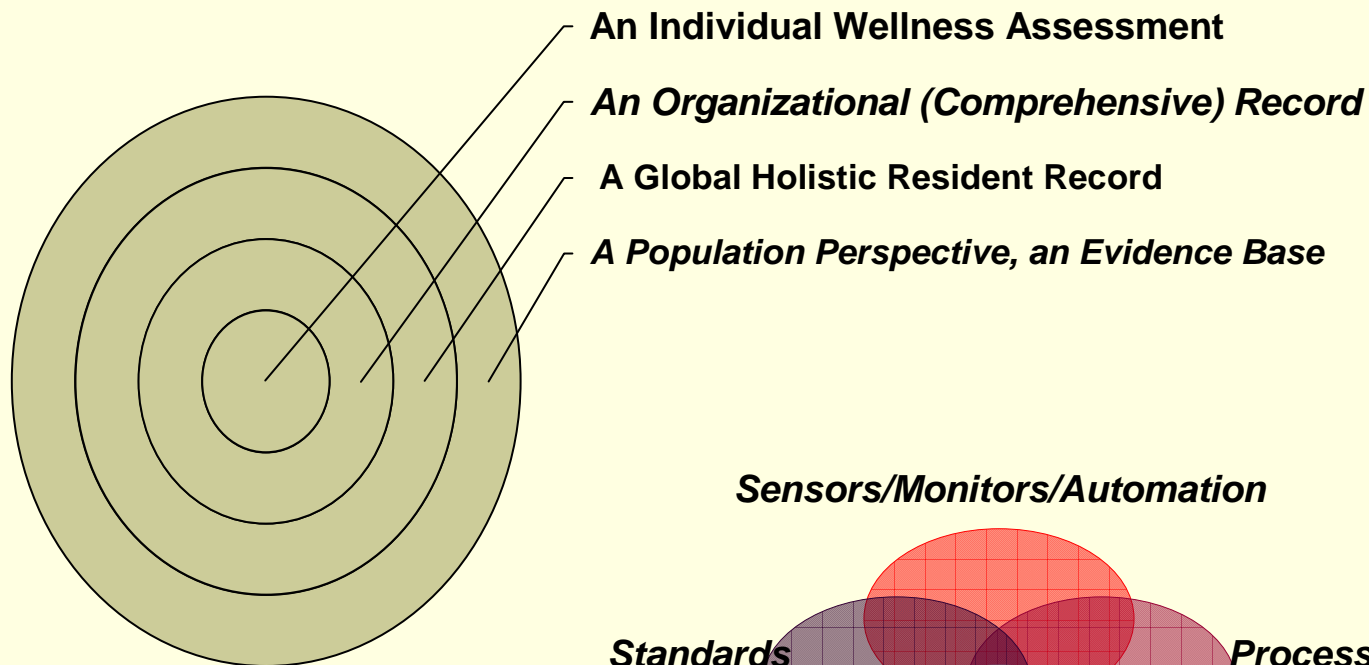
■ Tablets as the ultimate remote control

- Media, Environment, Energy, Security
- Safety, Communications
- “I’m Home” “Good Night”

■ Aging Smart, Living Well

- RWJ: ProjectHealthDesign
 - Observations of Daily Living (ODL)
- My Wellness Dashboard <Prius example>
- Tele-wellness “consulting & monitoring”

Wellness Assessment Data Perspective



Implications

- Infrastructure
 - Ensure your care/hospitality environments are connected
 - Begin exploring how to make your environments smarter
 - Leverage nextgen devices to support for staff and resident experience
- Rich Data
 - Store your data in a cloud where it is secure, available and connected
 - Feed your data from sensors
 - Observations of Daily Living
 - Implement standards to ensure that your data can be both incorporate and feed other data sets
 - Use evidence based data analytics to interpret your data
 - Shape action <checklists>
 - Provide residents self-service actionable access to your data
 - Self report & self inform
- Process
 - Integrate into hospitality and care processes
 - Avoid Silos

Questions, Contact & References

Peter Kress
VP & CIO
ACTS Retirement-Life Communities, Inc.
kress@actslife.org

Some of my current thinking has been influenced by the following.

Meeker, Mary on the Mobile Web

http://www.morganstanley.com/institutional/techresearch/mobile_internet_report122009.html

Gawande, Atul on checklists

<http://gawande.com/the-checklist-manifesto>

Malone, Michael on the Protean Corporation

<http://www.randomhouse.com/catalog/display.pperl?isbn=9780307406903>